



**TOLL  
CUSTOMS**

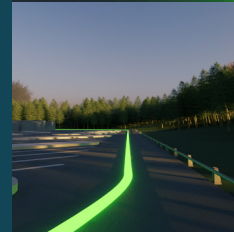
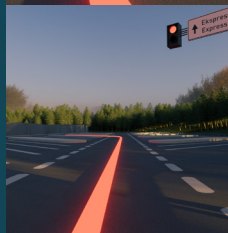
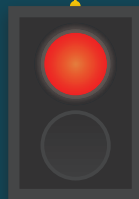
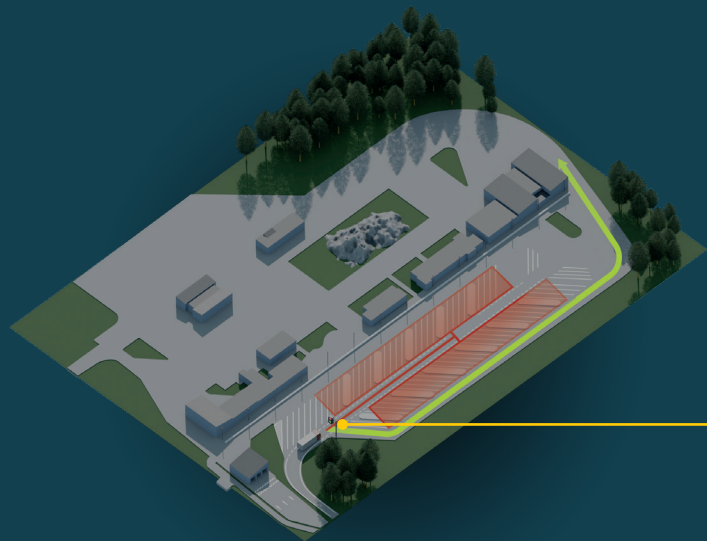


**EXPRESS  
CLEARANCE**

*Pilot*



# SVINESUND



## The driver must stop the vehicle and report to the office:



At a red light or faulty light signal.



If the driver and/or passenger has brought a different number or different type of goods than what is registered in the manifest. Also applies to a green light.



If the driver and/or passenger has brought goods for personal use that should be declared. Also applies to a green light.

### Tips:

- When passing – position the vehicle in the centre of the road
- Remember to keep a low speed and a good distance from the vehicle in front
- Ensure that the signs on the vehicle are clean and legible

[toll.no/ekspresfortolling](https://toll.no/ekspresfortolling)

**TOLL**  
**CUSTOMS**